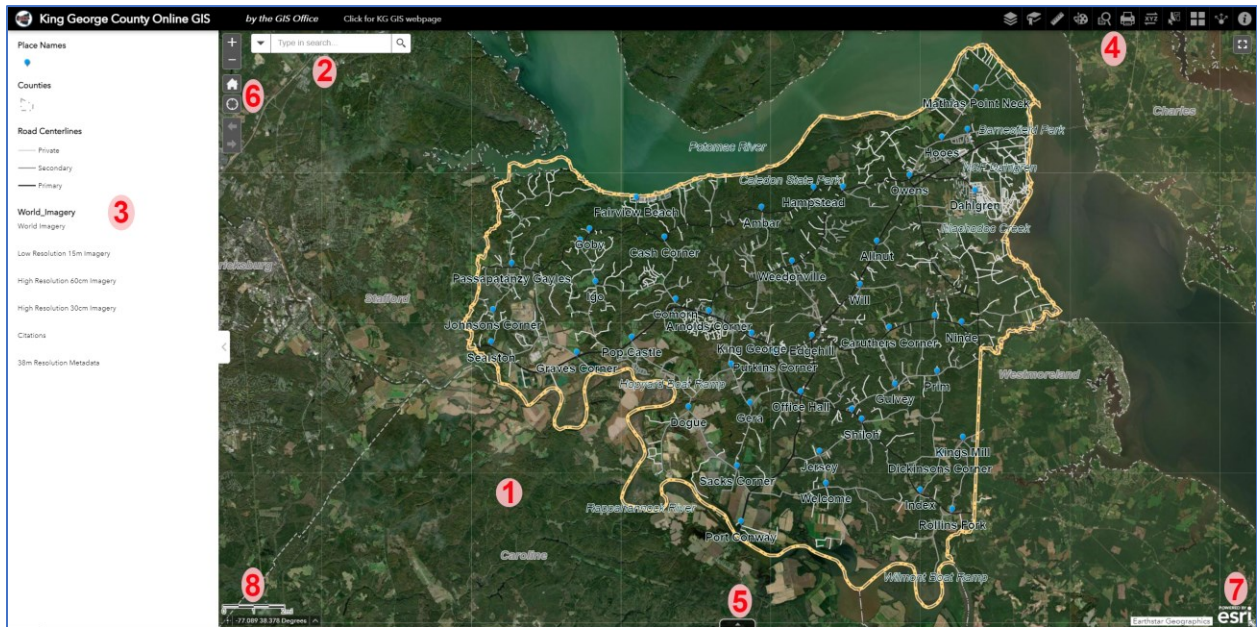


Welcome to the New King George Online GIS!





1 = Map - Click on any feature for more information about that feature. Some features are scale dependent.

2 = Search - Type in an address, parcel number (no spaces), parcel owner (last name first name [no comma]), road name, subdivision, or instrument number.

3 = Legend - Shows the symbology of the layers that are on the map.

4 = Tool bar – Layer List, Bookmark, Measure, Draw, Query, Print, Coordinate Conversion, Select, Basemaps, Share, and Help tools to interact with the map.

 Layer List tool – turn layers on/off and change layer settings.

 Basemap tool – change the background aerial imagery to a different year.

 Help tool – information on map and tools.

5 = Table – An expandable table showing data for addresses, roads, and parcel data. Queried features can also be opened in the table.

6 = Navigation – Zoom in/out, Full Extent, Zoom to GPS (phone), Previous/Next extents.

7 = Overview Map – Expandable map window showing the current extent at a large scale.

8 = Scale bar/Coordinate – Shows a scale bar for the map and coordinates of mouse on map.

Scan QR code for Online GIS

