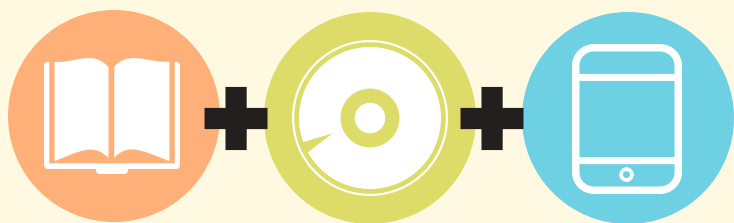


BOOKS & MATERIALS



126,700

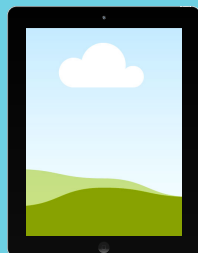
ITEMS BORROWED

NEW ITEMS ADDED TO COLLECTION



4,732

PHYSICAL ITEMS



1,847

ELECTRONIC ITEMS

PEOPLE & PROGRAMS

218,262 Visitors

284 Programs

8,626 Program Attendees

2,925 Meeting Rooms Used



1,606
NEW IN
2015

8,864 CARDHOLDERS



1,752 Volunteer Hours

COMPUTER USAGE



17,655

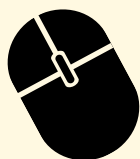
Total Users

1,398,674

Total Minutes

23,118

Catalog
Searches



FY 2014/15 FINANCIALS

65 % Personnel

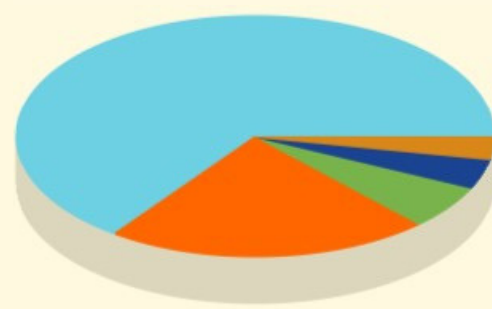
22 % Materials

6 % Technology

4 % Facilities

3 % Programming

EXPENDITURES



REVENUE

Fines & Fees - \$27,750

Endowment Interest - \$29,163

Virginia State Aid - \$90,229

King George County - \$348,832

Total - \$495,974

LIBRARY SERVICES



233

PASSPORTS



7,940

REFERENCE
QUESTIONS



124

NOTARIES